

# TABLES AND GRAPHS WITH ERRORS | ISA

What is wrong with these tables and graphs; why have all the marks not been awarded?

1

## Investigating average velocity of falling object

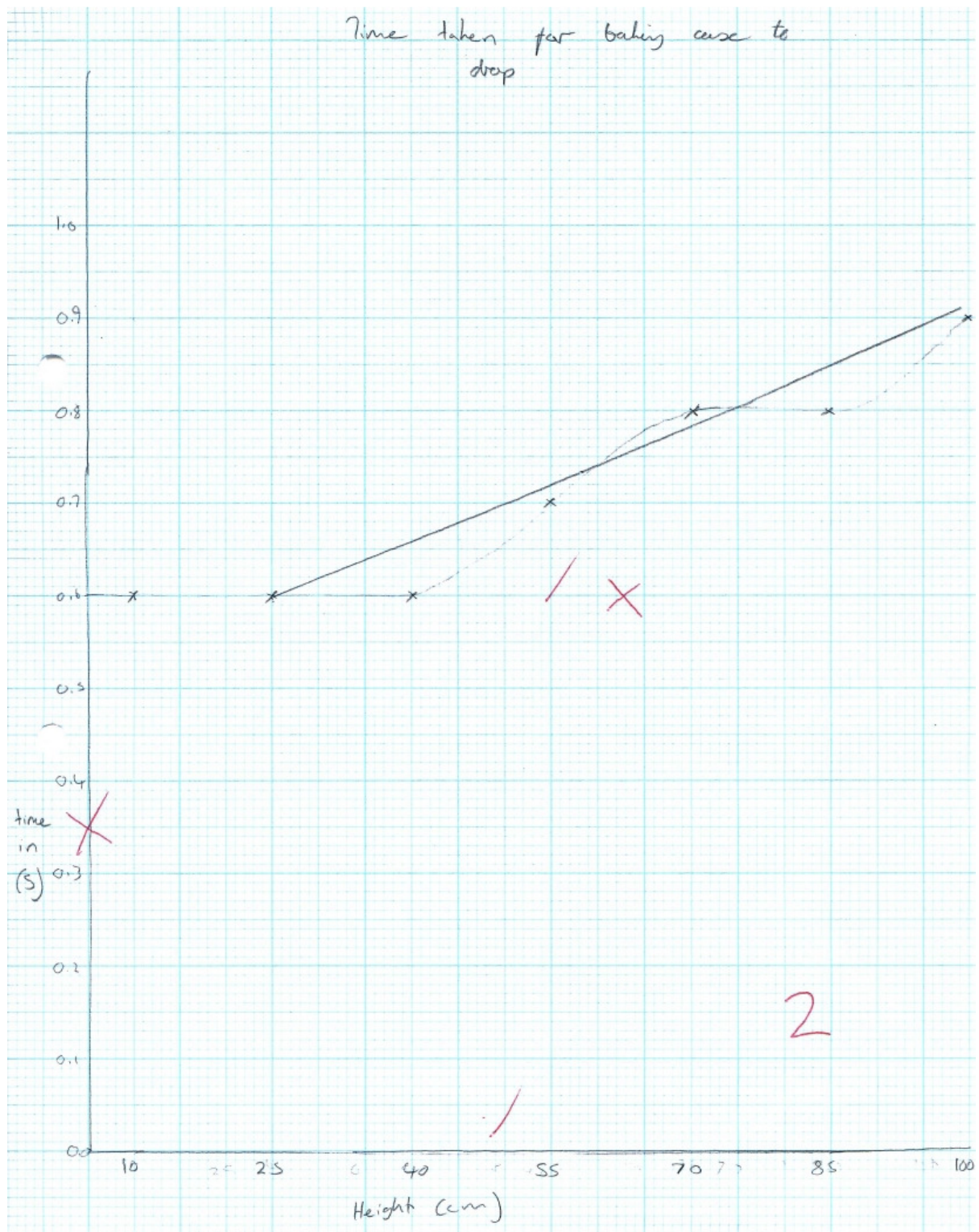
height/cm	Time taken for baking case to fall/s			average velocity of falling object/s
88	0.4	0.5	0.5	0.5
98	0.5	0.6	0.5	0.6
108	0.7	0.9	0.9	0.8
118	0.9	0.9	0.9	0.9
128	1.0	1.0	1.0	1.0
138	1.1	1.1	1.1	1.1
148	1.2	1.1	1.2	1.2
158	1.2	1.3	1.3	1.3
168	1.3	1.3	1.3	1.3
178	1.4	1.4	1.3	1.4
188	1.5	1.5	1.4	1.5

2

drop Height (cm)	time taken to fall (s)			average time taken to fall (s)	velocity (m/s)
	1	2	3		
20	<del>0.13</del> 0.13	<del>0.18</del> 0.18	<del>0.16</del> 0.16	0.15	
40	0.25	0.25	0.29	0.26	
60	0.54	0.47	0.50	0.50	
80	0.50	0.62	0.63	0.58	
100	0.62	0.53	0.59	0.58	
120	0.63	0.65	0.69	0.65	
140	0.88	0.75	0.75	0.79	
160	0.81	0.78	0.78	0.79	
180	1.06	1.03	0.97	1.02	
200	1.10	1.08	1.12	1.10	

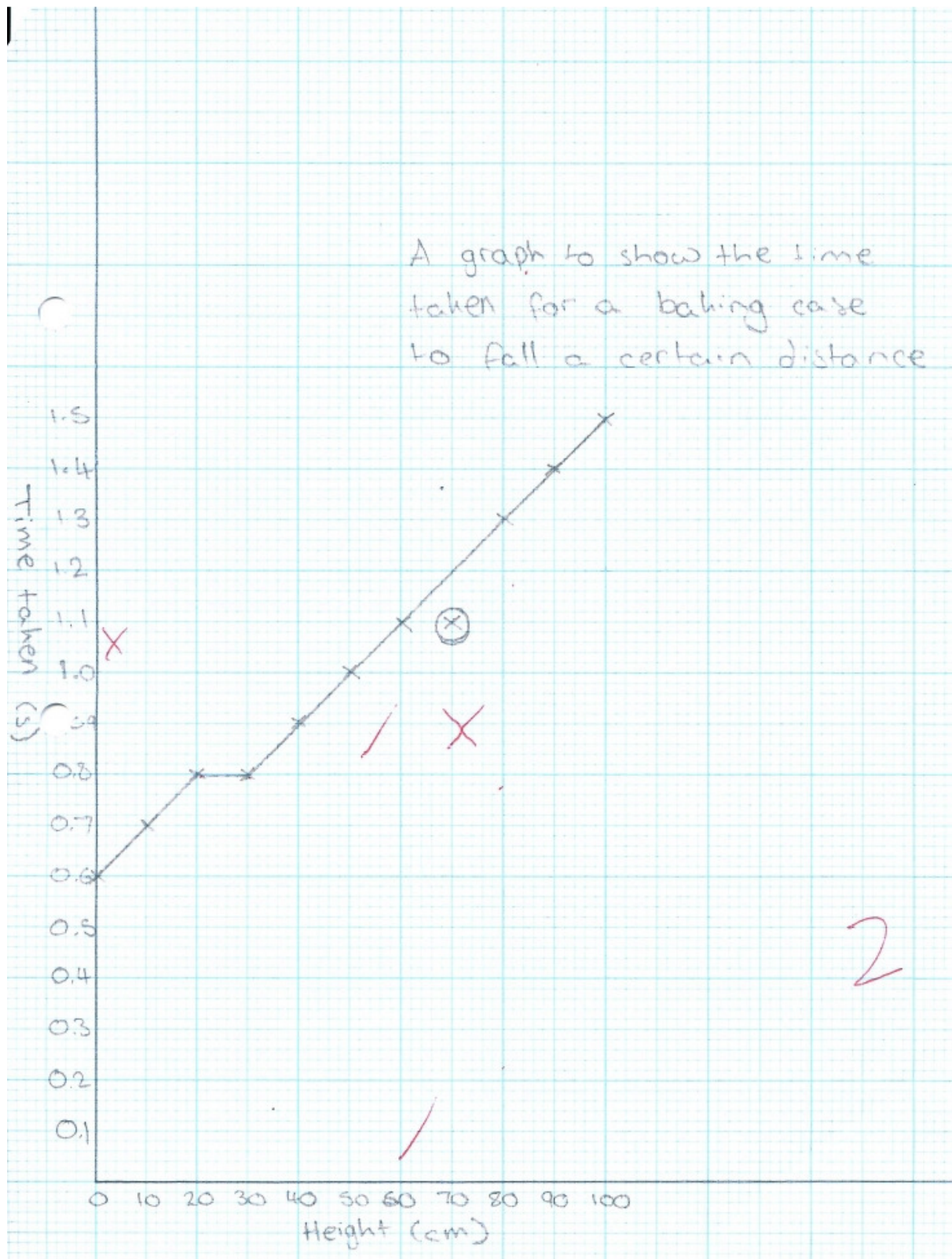
# TABLES AND GRAPHS WITH ERRORS | ISA

3



# TABLES AND GRAPHS WITH ERRORS | ISA

4



# TABLES AND GRAPHS WITH ERRORS | ISA

5

